



NAVIGATING HEALTH INSURANCE

Family Health Forums are designed to bring together families and care givers of Special Olympics athletes with health care professionals to access information and have insightful conversations. Join panelists from Washington Autism Alliance & Advocacy (WAAA), The Arc, and SOWA Athlete Leadership to discuss how to navigate health insurance for people with intellectual and developmental disabilities.

JULY 27
MONDAY
6:00 PM
ZOOM

REGISTER HERE OR
FOLLOW THIS LINK:

https://us02web.zoom.us/webinar/register/WN_JE7x-R1MQ8C4aoecTjpMOg

CONTACT

Della Norton
dnorton@sowa.org

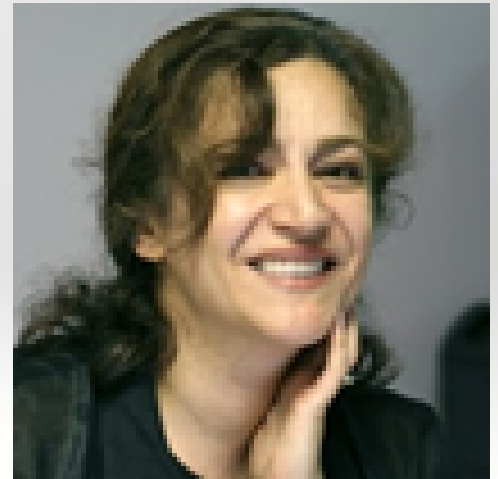
Leah Shaffner
lshaffner@sowa.org



KELLY CAMPBELL

SOWA BOARD MEMBER & ATHLETE LEADER

Kelly is a SOWA Athlete Leader from Seattle. She has been involved for many years, playing golf, basketball, softball, bowling and aquatics. Kelly is a SOWA Board Member and sits on both the executive and developing committees. She is on the SOWA Athlete Input Council (AIC), US AIC, and the Risk Management Insurance Task Force (RMITF). She was recently asked to join the SOI athlete leadership team to co-facilitate leadership events. With her leadership skills, she became the union representative at PCC Community Markets where she has worked for 19 years.



ARZU FOROUGH

PRESIDENT/CEO WASHINGTON AUTISM ALLIANCE & ADVOCACY

Ms. Forough brings over 20 years of experience in training and development to her position, including leadership development, government relations and non-profit management. Arzu introduced Shayan's Law, Autism Insurance Parity to the WA State legislature, petitioned the state Health Technology Assessment of evidence-based treatment of autism and ignited multiple legal actions that have clarified state and federal laws mandating insurance benefits for those with autism and other developmental disabilities.

MELISSA BROOKS

ARC OF TRI-CITIES P2P COORDINATOR, SOWA PARENT

